

Project Management Plan

by

Team LID

John De Leon / Project Manager

Treyton Moore / Team Lead

Jingwen He / Geotechnical Lead

Kevin Liang / ArcGIS Lead

General Information

The vision of Team LID is to provide sustainable quality engineering while maintaining

high ethical and moral standards. The purpose of our project is to analyze the LID stormwater systems in Spanish Fork, Utah, to determine if they meet EPA standards. The LID system capacity will be analyzed and compared with various storm sizes in order to determine if the EPA standard is being met.

Major Sponsor, Mentor Information

Sponsor:

Chris Thompson, P.E.

Spanish Fork City

Public Works Director/City Engineer

(801) 804-4556

cthompson@spanishfork.org

Mentor:

John De Leon

Brigham Young University Graduate Student

(512) 576-7212

johndeleon2009@gmail.com

Faculty or Other Advisor:

M. Brett Borup

Ph.D. Engineering, Clemson University, 1985.

Associate Professor

Environmental Engineering

Office 242G Clyde Building

(801) 422-6311

borupb@byu.edu

Gus Williams

Ph.D. Civil Engineering, Northwestern University, 1994.

Associate Professor

Environmental Engineering & Hydrology

Office 242F Clyde Building

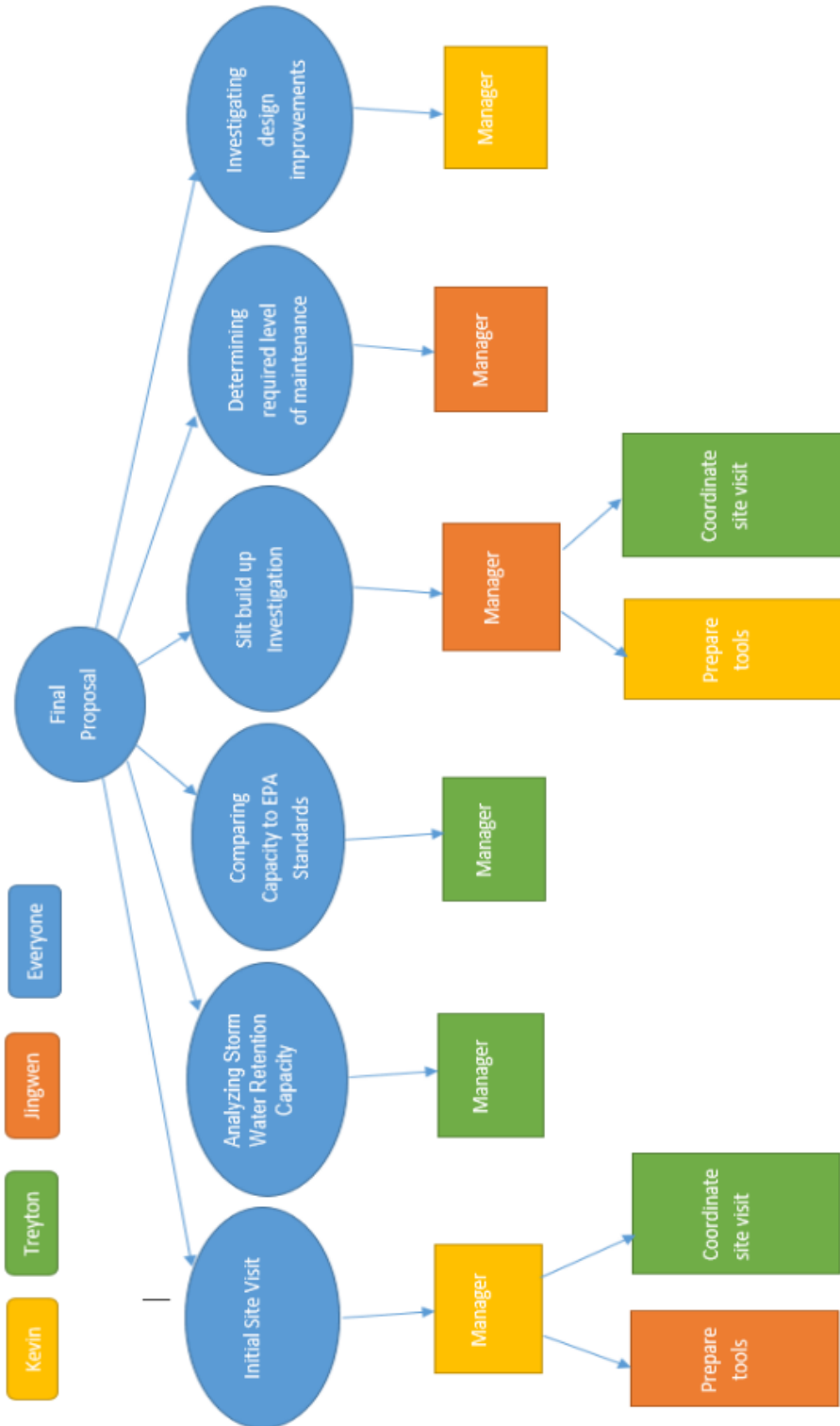
(801) 422-7810

gwilliams@et.byu.edu

John De Leon is the person we will contact when we have general questions about the project or when we need to communicate with the sponsor. We communicate with John through email and text messages. We also have weekly meeting with him to report on our progress. We

will also go to our professors for technical help. We will email them first to set up an appointment and then meet with them in their office.

Organizational Structure



Each person in the team is in charge of two major aspects of this project. Kevin is the manager for initial site visit and investigation of design improvements. Treyton is in charge of

the storm water retention capacity analysis and comparing capacity to EPA standards. Jingwen will lead the investigation of the silt build up and the required level of maintenance. Even though every member in the team is in charge of two major aspects of the project, everyone will work with each other and contribute to each step of the project.

Scope of Work Summary

Spanish Fork City has asked that we determine whether its Low Impact Development (LID) neighborhoods are meeting EPA standards and evaluate silt build-up so that a proper maintenance schedule can be made. Spanish Fork's LIDs are made of R-tanks for storing and slowly diffusing stormwater. Before performing on-site testing, hydrological data will be collected, impermeable and permeable areas will be determined and volume of R-tanks will be calculated. On-site testing of these R-tanks will include infiltration rate tests, silt build up tests and soil sample collecting. With the data collected, we can then run 5, 10, 25, 50 and 100-year storm simulations for the LIDs.

We will learn and perform many industry-relevant tasks from working with our mentor and sponsor. This will include technical skills such as designing different intensity and levels of storms, soil testing, ArcGIS, and techniques for designing an LID that meets EPA standards. We will also be learning how to properly communicate between a client and manager, how to present results, and other career developing skills.

Schedule

January[1]

| Su | M | Tu | W | Th | F | Sa |
|----|----|----|----|----|----|----|
| | 1 | 2 | 3 | 4 | 5 | 6 |
| | 7 | 8 | 9 | 10 | 11 | 12 |
| | 13 | 14 | 15 | 16 | 17 | 18 |
| | 19 | 20 | 21 | 22 | 23 | 24 |
| | 25 | 26 | 27 | 28 | 29 | 30 |
| | 31 | | | | | |

February

| Su | M | Tu | W | Th | F | Sa |
|----|----|----|----|----|----|----|
| | | | 1 | 2 | 3 | 4 |
| 5 | 6 | 7 | 8 | 9 | 10 | 11 |
| 12 | 13 | 14 | 15 | 16 | 17 | 18 |
| 19 | 20 | 21 | 22 | 23 | 24 | 25 |
| 26 | 27 | 28 | | | | |

March

| Su | M | Tu | W | Th | F | Sa |
|----|----|----|----|----|----|----|
| | | | 1 | 2 | 3 | 4 |
| 5 | 6 | 7 | 8 | 9 | 10 | 11 |
| 12 | 13 | 14 | 15 | 16 | 17 | 18 |
| 19 | 20 | 21 | 22 | 23 | 24 | 25 |
| 26 | 27 | 28 | 29 | 30 | 31 | |

April

| Su | M | Tu | W | Th | F | Sa |
|----|----|----|----|----|----|----|
| | | | | | | 1 |
| 2 | 3 | 4 | 5 | 6 | 7 | 8 |
| 9 | 10 | 11 | 12 | 13 | 14 | 15 |
| 16 | 17 | 18 | 19 | 20 | 21 | 22 |
| 23 | 24 | 25 | 26 | 27 | 28 | 29 |
| 30 | | | | | | |

Milestones

- Jan 20** Initial site visit
- Feb 3** Analyzing stormwater
- Feb 17** Compare EPA standards
- Mar 4** Silt build up investigation
- Mar 15** Determining required maintenance
- Mar 25** Investigate design improvement
- Apr 10** All Deliverables Complete

Lighter colors are what we are going to be working on to reach Milestones

Budget

Travel to Spanish Fork and Back: \$10

Dinner with Sponsor for Final Presentation: \$75

Total: \$85

Communication Plan

Weekly Work Schedule

| | Treyton | Kevin | Jing | | | | | |
|-------|---------|---------|-----------|----------|--------|--|--|--|
| Hours | Monday | Tuesday | Wednesday | Thursday | Friday | | | |
| 10 | | | | | | | | |
| 11 | | | | | | | | |
| 12 | | | | | | | | |
| 1 | | | | | | | | |
| 2 | | | | | | | | |
| 3 | | | | | | | | |
| 4 | | | | | | | | |
| 5 | | | | | | | | |

Work will be reported once a week to our mentor, John De Leon, on Wednesday when we meet with him. John De Leon will be the communicating with our sponsor of any updates or questions we have about our project.